

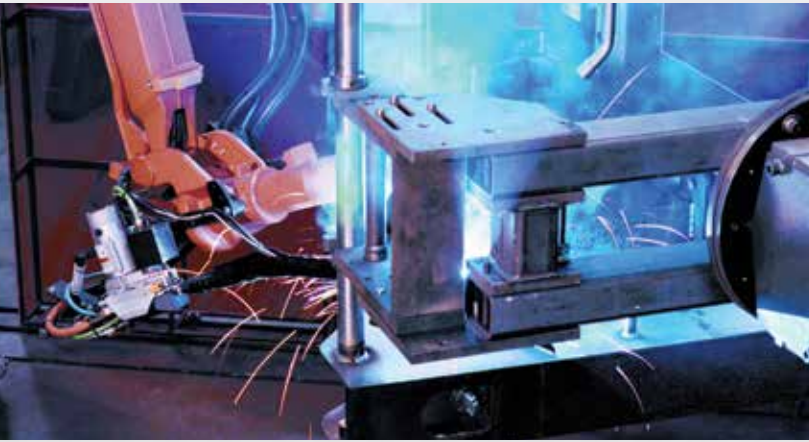
TRACK LOADERS

GEHL®

RT165 | RT175 GEN:3 | RT210 GEN:3 | RT250 GEN:3 | VT320



A LEGACY OF INNOVATION



IN 1859, AN AGRICULTURAL IMPLEMENT COMPANY, HOUSED IN A BLACKSMITH SHOP, WAS STARTED IN WEST BEND, WISCONSIN.

FROM THESE HUMBLE BEGINNINGS, THE GEHL BRAND HAS BECOME A MAJOR FORCE IN THE COMPACT EQUIPMENT INDUSTRY WORLDWIDE.

Since the beginning, Gehl has focused on providing solutions to our customer's needs by building quality, reliable products. With a long history of reliability and innovation, Gehl is responsive to the equipment and service needs of our customers.

With modern compact equipment manufacturing facilities in Yankton and Madison, South Dakota, and a state-of-the-art research and design facility in West Bend, Wisconsin, Gehl ensures that they are equipped with the finest in technology, tools and materials. And our top corps of engineers are skilled in designing and enhancing high-quality machines to fit the specific needs of our customers. Our equipment is modern in design and performance, but not too complicated to operate or service.

And when you purchase a piece of Gehl equipment, you have an entire organization behind you and your business. When you need support, whether it be financing, parts or service, know that Gehl will be there to provide an exceptional experience. We continually strive to preserve the level of personalized attention that Gehl began with in 1859.

STAY ON TRACK WITH GEHL



RT165

WHAT IS THE CURE FOR THE TENSION HEADACHES CAUSED BY OTHER TRACK MACHINES? THE RT SERIES FROM GEHL.

With many industry-exclusive features, including the patented IdealAccess™ Fold-Up Door* and the IdealTrax™ Automatic Track Tensioning System, the RT165, RT175 GEN:3, RT210 GEN:3, RT250 GEN:3, and VT320 will break through the industry standards.

** IdealAccess™ not available on the RT165*



RT175 GEN:3

IdealTrax™ | IdealAccess™



RT210 GEN:3



RT250 GEN:3



VT320



GEHL

LIFT ARM

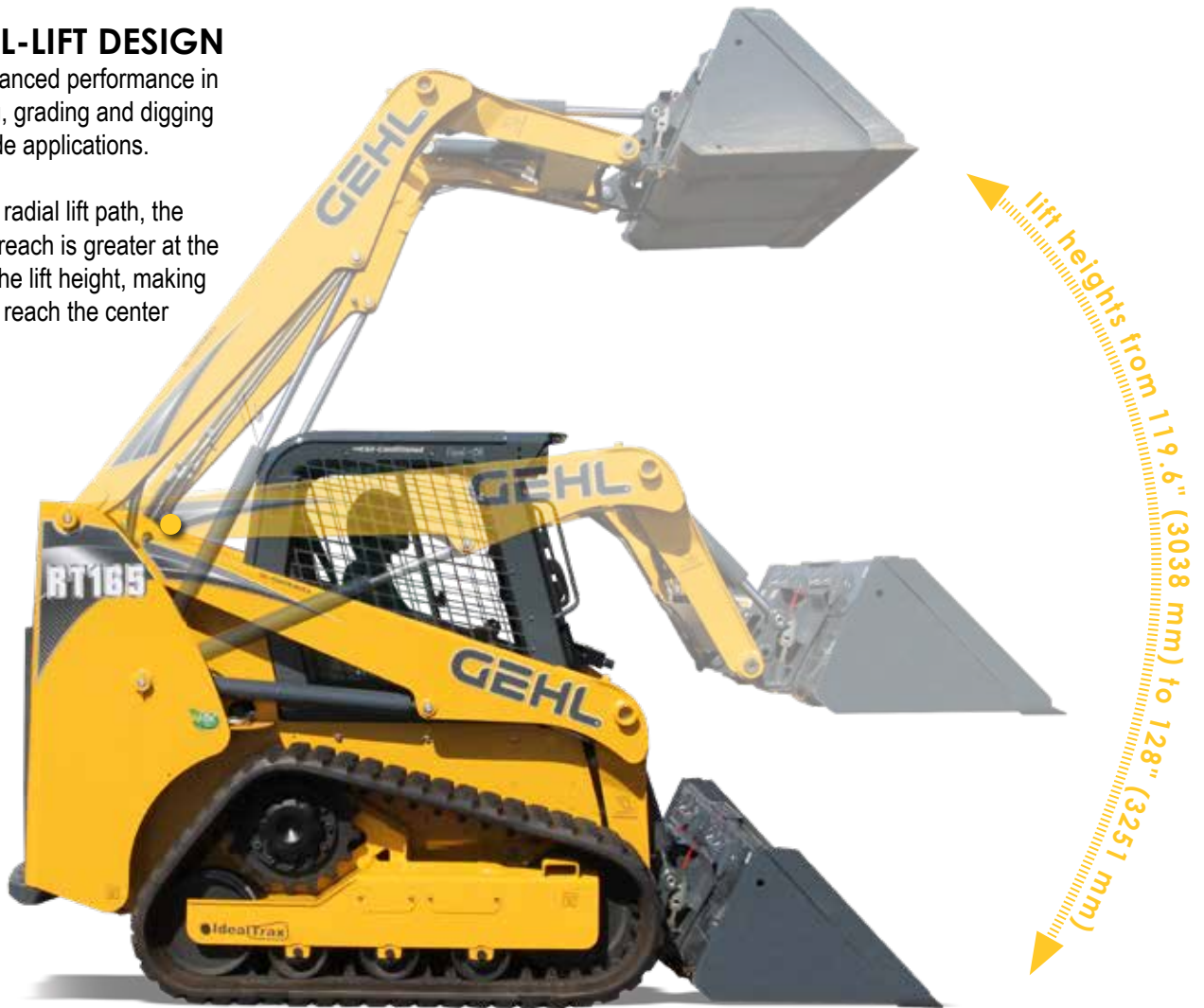
- RADIAL-LIFT and ● VERTICAL-LIFT

TWO DESIGNS - ENDLESS POSSIBILITIES

- **RADIAL-LIFT DESIGN**

Offers enhanced performance in excavating, grading and digging below grade applications.

Due to the radial lift path, the maximum reach is greater at the middle of the lift height, making it easier to reach the center of trailers.



- **EXCELLENT FORWARD REACH**

The Gehl radial-lift track loaders provide excellent forward reach at the middle of the lift path. This provides high performance for loading flatbed trucks, backfilling or dumping over a wall.

● **VERTICAL-LIFT DESIGN**

Providing more reach at full lift height is optimal for applications that require loading and stacking at high heights. By keeping the load closer to the machine, lift capacities are increased over radial-lift models.



● **TRUE VERTICAL**

The VT320 has a true vertical lift path of almost 11 feet.



● **REAR VISIBILITY**

Rear lift arm support bar is positioned out of the sight line as the lift arm is raised. This allows for excellent visibility to the rear through the entire lift cycle.

GEHL®

PERFORMANCE

● POWER and ● PERFORMANCE

ALL-NEW RT165: THE IDEAL TRACK LOADER

● IDEALTRAX™ INDUSTRY EXCLUSIVE AUTOMATIC TRACK TENSIONING SYSTEM

Eliminate weekly tension checks and costly track replacements with the IdealTrax™ system. Tracks are automatically tensioned when the engine is started and during operation. Tension is released when the engine is shut off.

● HIGH BREAKOUT FORCES

TILT	4,230 lbs. (1919 kg)
LIFT	5,060 lbs. (2295 kg)

● TIER IV ENGINE

POWER	69.3 hp (52 kW)
TORQUE	178 ft.-lbs. (241Nm)

● CHOICE OF CONTROLS

Choose between pilot joystick, T-bar, or hand/foot controls to suit operator preference. A conversion kit is available for the pilot dual-hand control system.



● RATED OPERATING CAPACITY

RT165	1,650 lbs. (794 kg)
-------	---------------------



● **ADAPTED SKID LOADER CHASSIS**

Custom built from the proven design of the R165 skid loader to aid in superior weight distribution. This design enhances stability, grading, tractive effort, and ride control.



● **COUNTERWEIGHT/BUMPER**

Gain extra tipping capacity while offering increased rear protection.

● **GROUND CLEARANCE**

RT165 **7.3" (185 mm)**

● **LIFT HEIGHT**

RT165 **119.6" (3038 mm)**



● **MACHINE WIDTH OPTIONS**

The RT165 has a width of 71.5" (1816 mm) when outfitted with wide tracks and 68" (1727 mm) with the narrow track option.

Customize your width for applications needing a more compact machine. A narrow frame is available to special order with a 66" (1676 mm) overall width.

● **OPTIMIZED RADIAL LIFT ARM**

Durable design provides increased strength and optimal loading performance.



PERFORMANCE

● POWER and ● PERFORMANCE

THE ALL-TERRAIN AUTHORITY FROM GEHL

● IDEALTRAX™

INDUSTRY EXCLUSIVE AUTOMATIC TRACK TENSIONING SYSTEM

Eliminate weekly tension checks and costly track replacements with the IdealTrax™ system. Tracks are automatically tensioned when the engine is started and during operation. Tension is released when the engine is shut off.

IdealAccess™



● FOLD-UP DOOR

This patented new design provides cab-to-canopy versatility, all while maintaining low machine height and a Level II FOPS certification.

● INCREASED BREAKOUT FORCES

Enhanced breakout forces on the GEN:3 models make these machines your greatest allies on the job with tilt breakout forces from 5,354 lbs. (2 429 kg) to 8,384 lbs. (3 803 kg) and lift breakout forces from 5,016 lbs. (2 275 kg) to 7,437 lbs. (3 373 kg).

● SWITCHABLE CONTROLS

The operator can switch the controls from joystick to dual hand effortlessly.



● TRAVEL SPEED LIMIT OPTION

Lowers maximum speed and allows full joystick movement.

● RATED OPERATING CAPACITY

RT175 GEN:3	1,750 lbs. (794 kg)
RT210 GEN:3	2,100 lbs. (953 kg)
RT250 GEN:3	2,500 lbs. (1134 kg)

● TIER IV ENGINES

RT175 GEN:3
RT210 GEN:3
RT250 GEN:3

POWER

69.9 hp (52.1 kW)
72 hp (53.7 kW)
74.3 hp (55.4 kW)

TORQUE

179 ft.-lbs. (242.7 Nm)
206 ft.-lbs. (279.3 Nm)
243 ft.-lbs. (330 Nm)



- DEDICATED, WELDED TRACK LOADER CHASSIS**
 Custom built to aid in superior weight distribution, which enhances stability, grading, tractive effort, and ride control.

- COUNTERWEIGHT/BUMPER**
 Gain extra tipping capacity while offering increased rear protection.

*Optional on the RT175 GEN:3 and RT210 GEN:3.
 Standard on the RT250 GEN:3. Additional side-mounted counterweight is optional on the RT250 GEN:3.*

- GROUND CLEARANCE CLASS LEADING**

RT175 GEN:3	13.1" (333 mm)
RT210 GEN:3	13.2" (335 mm)
RT250 GEN:3	13.2" (335 mm)

- HORSEPOWER MANAGEMENT SYSTEM**

This feature monitors and adjusts the hydrostatic drive pump to produce the ideal tractive effort.



- LIFT HEIGHT CLASS LEADING**

RT175 GEN:3	128" (3251 mm)
RT210 GEN:3	128" (3251 mm)
RT250 GEN:3	128" (3251 mm)

- OPTIMIZED RADIAL LIFT ARM**
 Durable design provides increased strength and up to 128" (3251 mm) of lift height - higher than any competitor in their respective weight class.

- STRAIGHT TRACKING**
 This feature provides for in-cab, tool-free adjustment of individual track speeds, ensuring the machine drives straight.



GEHL

PERFORMANCE

● POWER and ● PERFORMANCE

ALL-NEW VT320: SUPER SIZE YOUR FLEET

● IDEALTRAX™ INDUSTRY EXCLUSIVE AUTOMATIC TRACK TENSIONING SYSTEM

Eliminate weekly tension checks and costly track replacements with the IdealTrax™ system. Tracks are automatically tensioned when the engine is started and during operation. Tension is released when the engine is shut off.

● POWERFUL BREAKOUT FORCES

Class-leading lift breakout force and high tilt breakout force give you the power needed to break out concrete slabs, frozen piles of dirt or remove tree stumps.

	TILT	LIFT
VT320	9,296 lbs. (4216 kg)	7,467 lbs. (3387 kg)

IdealAccess™



● **FOLD-UP DOOR**
The Gehl patented design provides cab-to-canopy versatility, all while maintaining low clearance and a Level II FOPS certification.

● PILOT JOYSTICK CONTROLS

The hydraulic-pilot controls found in the Gehl skid loader line control the all-new VT320 track loader. By mounting the controls to the seat, they move with the operator.



● RATED OPERATING CAPACITY

VT320 3,200 lbs. (1452 kg)

● TIER IV ENGINES

VT320

POWER

114 hp (85 kW)

TORQUE

339.3 ft.-lbs. (460 Nm)



● **DEDICATED, WELDED TRACK LOADER CHASSIS**

Designed to aid in superior weight distribution, which enhances stability, grading, tractive effort, and ride control.



● **COUNTERWEIGHT/BUMPER**

Standard rear bumper protects the rear of the machine. Optional side-mounted counterweights provide additional operating capacity.

● **LIFT HEIGHT**

VT320 130" (3302 mm)



● **GROUND CLEARANCE**

VT320 12.16" (309 mm)

● **VERTICAL LIFT ARM**

The vertical lift path design maintains the forward reach at full lift height. This is ideal for applications that require loading and placement of materials.

● **ADD VERSATILITY**

Lift arm down stops are adjustable for added attachment versatility.

● **ECO MODE**

Allows the machine to run at reduced power while maintaining cycle times.



OPERATOR STATION

● COMFORT and ● SAFETY



EH controls



Pilot controls

● ELECTRIC ATTACHMENT CONTROL

This factory-installed option controls multi-function attachments directly through the joystick.

● PREMIUM SEAT

Standard deluxe, high-back mechanical suspension seat or an optional air-ride seat for operator comfort.

● OPERATOR PRESENCE

Brakes are applied and hydraulics are disabled whenever the operator raises the restraint bar, leaves the seat or switches off the ignition.

RT Series GEN:3 model cab shown

● CREATURE COMFORTS

Dome light, cup holder, two 12-volt outlets, and multiple adjustable air vents.

● **VISIBILITY** A cab-forward design enhances the view to the bucket cutting edge from the operator's seat. Extra-large side screens combined with a low-profile lift arm design provide a wide field-of-view to the side work areas.

● ARMRESTS/RESTRAINT BARS

All instrumentation and fully adjustable joystick control towers are conveniently located on the armrests for easy access. High-mounted restraint bars provide ample clearance for the operator's legs.

● PRESSURIZED CAB

Optional, pressurized sealed cab enclosure with sound reduction material and large rear-mounted cabin air filter provides a cleaner and quieter operating environment.

● OPERATOR STATION FEATURES



REAR VIEW CAMERA

Increase visibility to the rear of the machine with a rear view camera.



RADIO OPTION

Factory installed, this AM/FM deluxe radio option customizes your cab.

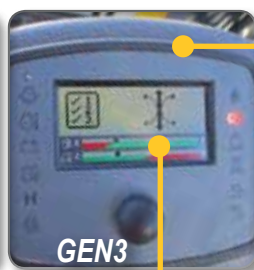


CLIMATE CONTROL

Heat is standard on all cab models. Upgrade to air conditioning for additional comfort.



RT165/VT320



GEN3

INTEGRATED LCD DISPLAY

Easy-to-use, multi-function display incorporates all warning/operation lights and machine configuration screens. Single button allows for simple scrolling and selection of various display functions.

STRAIGHT TRACKING

Tracking is easily corrected from the operator seat using the display. It can also be used to compensate for offset or side-loaded attachments.

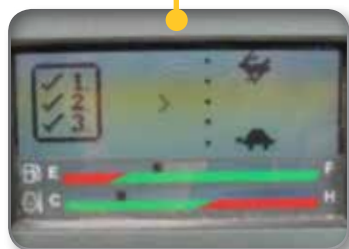
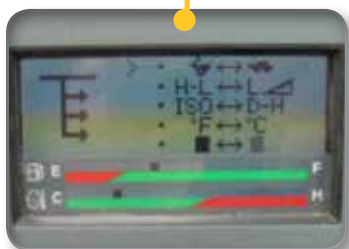
Not available on RT165 and VT320

DRIVE SENSITIVITY ADJUSTMENT

Five settings are available to adjust the operator drive speeds and response times. Each user can customize the control to their preference using the LCD display.

Not available on RT165 and VT320

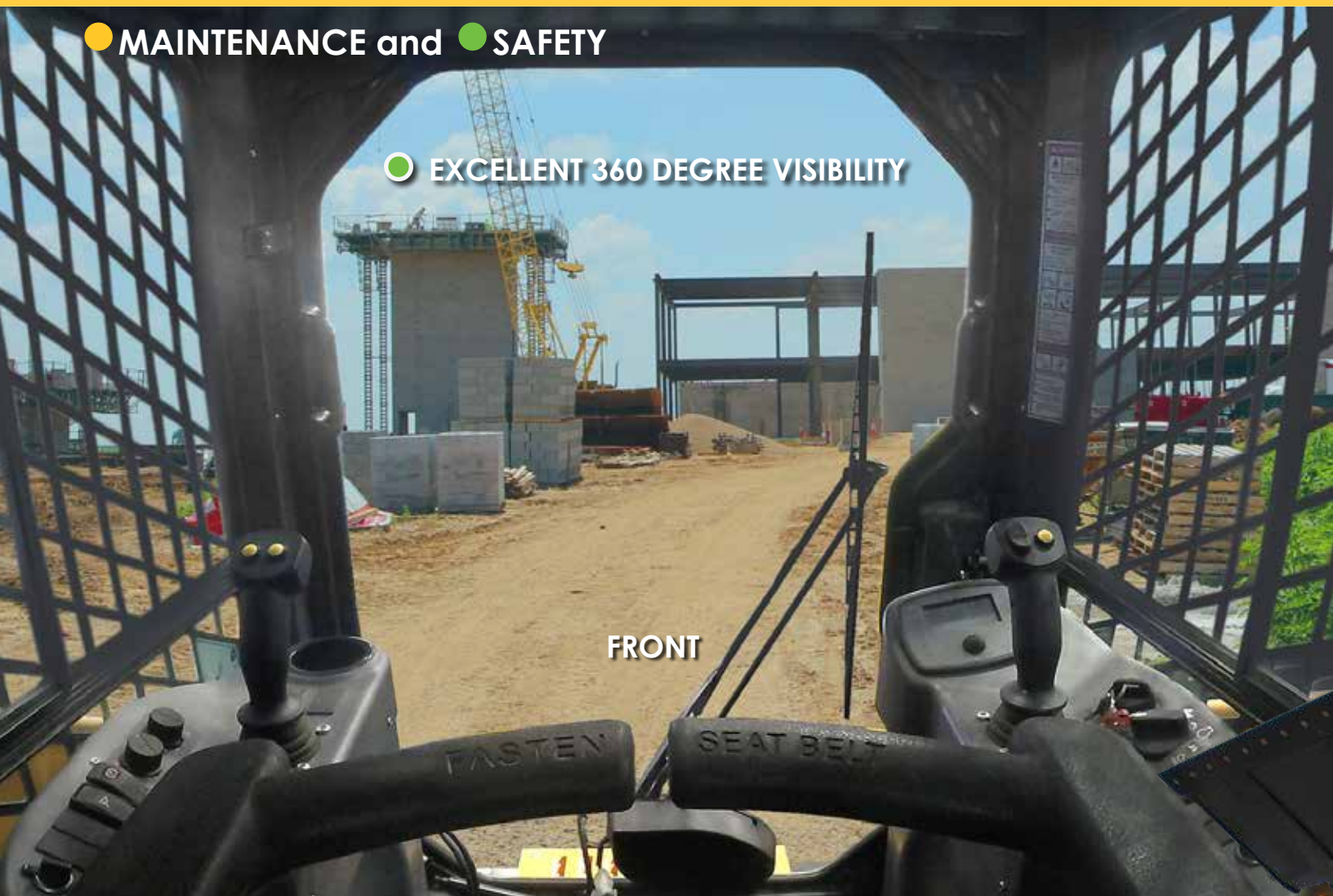
Drive Sensitivity Adjustment	Operator Feel Emulation
5 - Rabbit	+ 20% = Fastest • Highly Responsive • Highest Volume
4 - ●	+ 10% = Quick • Very Responsive • Control
3 - ●●	Standard Setting • Normal Response Time • Focused Productivity
2 - ●●●	- 10% = Precision • Improved Control
1 - Turtle	- 20% = High Precision • Easy Control • More Precise



SERVICE & SAFETY

● MAINTENANCE and ● SAFETY

● EXCELLENT 360 DEGREE VISIBILITY



FRONT



LEFT SIDE



REAR



RIGHT SIDE

RT Series GEN:3 model cab shown

EXCELLENT VIEWS FROM ALL SIDES FOR SAFE AND PRECISE OPERATION.

Excellent visibility to the front, sides and rear of the machine allow for precise placement of loads and reduced jobsite incidents. A high-mounted seat provides an excellent vantage point to the attachment and cutting-edge.

LESS DOWNTIME PUTS MONEY IN YOUR POCKET

● IDEALTRAX™ INDUSTRY EXCLUSIVE AUTOMATIC TRACK TENSIONING SYSTEM

- ▶ Eliminates the need for manually tensioning the tracks on the loader before operation, saving valuable time on the jobsite.
- ▶ Increases the life of the tracks (*up to 15%* in tested conditions*), sprockets and bearings by ensuring the proper tension immediately upon start-up and during use, and tension release when the machine is shut down.
- ▶ Track changes in the field are facilitated with the simple flip of a switch in the rear compartment. Removing a track without the IdealTrax™ system can take up to one hour per track. With IdealTrax™, it takes just minutes.

*Track life improvement varies greatly depending on conditions, application and upkeep; results may vary.



ENGINE NOT RUNNING



ENGINE RUNNING

● 17-TOOTH SPROCKETS

17-tooth, forged drive sprockets have 40% more hardness depth for improved sprocket life. Larger sprockets increase track-to-chassis clearance, so tracks can be cleaned out with ease.



● ENGINE ACCESS

Full access to filters and fluid reservoirs for servicing and maintenance is made possible by a swing-out rear door and a large, lockable engine cover.

● SWING OUT COOLER

Only available on RT165

● TILTABLE ROPS/FOPS ASSEMBLY

Featuring gas-spring assist for easy internal access to the pumps, hydraulic valve bank and drive motors.

● SAFETY RESTRAINT

Innovative restraint allows for secure positioning of the cab in the maintenance position. Restraint can be secured in position by one person.

● TILT-OUT FOOT POD

This feature allows for best-in-class foot well cleanout and provides perfect access to the fuel tank and other components under the cab.

Not available on RT165



ACCESSORIES

CUSTOMIZE YOUR RIDE.

Gehl offers a variety of accessories and upgrades that can be easily added to new or used equipment. These can help enhance an existing unit or customize one for a particular job. Whether you are looking to add a counterweight, boost your hydraulics, or enclose a cab to add heat and air conditioning, Gehl has the options you need to craft your ideal ride.

TRACK OPTIONS



CAB ENCLOSURES



HYDRAGLIDE™



CONTROLS (RT165)



SWITCHABLE SELF-LEVEL



RADIO



AIR CONDITIONING



HIGH-FLOW HYDRAULICS



POWER-A-TACH®



REAR VIEW CAMERA



COUNTERWEIGHT



FOLD-UP DOOR



not available on RT165

PROTECT YOUR INVESTMENT.

Trust the experts.
Make the *right* choice.

You expect year-to-year productivity from your Gehl equipment. That's why your trained and accredited Gehl dealer offers you the experience and skill necessary to maximize your equipment's performance. From routine maintenance to XPRT Genuine Parts to XPRT Protection Plan, your Gehl dealer is a partner you can count on to keep your equipment running smoothly.



XPRT
GENUINE PARTS

ROUTINE Maintenance



Eliminate unexpected repair costs and take better care of your Gehl equipment with the XPRT Protection Plan®. It ensures repairs will be made quickly with manufacturer-approved XPRT genuine parts by trained mechanics. If you're interested in saving money over the long haul, the XPRT Protection Plan® is an investment you should consider.

Features include:

- Affordable options available to meet your needs
- Select either powertrain component or full machine coverage for the right kind of protection for your equipment
- You decide the number of years and hours of coverage needed
- Enroll in the Plan on the day you purchase eligible equipment, or any time within six months or 500 hours from equipment registration

XPRT
PROTECTION PLAN

GEHL®

● ATTACHMENTS

CRAVE FLEXIBILITY? GEHL RT SERIES TRACK LOADERS ARE THE PERFECT SOLUTION.

Compatible with most allied loader attachments, the RT Series Track Loaders from Gehl provide superior loader functionality while minimizing damage to ground surfaces. Perfect for landscape, agriculture, construction or rental - these machines are up for any challenge.



● Available accessories

	RT165	RT175 GEN:3	RT210 GEN:3	RT250 GEN:3	VT320
AUGERS - CHAIN DRIVE					
1650 CL Auger Drive - Round - 2 9/16" (65 mm)	Std. Flow	Std. Flow	Std. Flow	Std. Flow	
1650 CLH Auger Drive - Hex - 2" (51 mm)	Std. Flow	Std. Flow	Std. Flow	Std. Flow	
AUGERS - PLANETARY DRIVE					
PA 210 Planetary Auger Drive - Round - 2 9/16" (65 mm)	Std. Flow	Std. Flow	Std. Flow	Std. Flow	Std. Flow
PA 220H Planetary Auger Drive - Hex - 2" (51 mm)	Std. Flow	Std. Flow	Std. Flow	Std. Flow	Std. Flow
AUGERS - BITS					
SQ 9" (229 mm) Auger Bit - Round - 4 teeth - 2 9/16" (65 mm)	●	●	●	●	●
SQ 12" (305 mm) Auger Bit - Round - 4 teeth - 2 9/16" (65 mm)	●	●	●	●	●
SQ 9" (229 mm) Auger Bit - Hex - 4 teeth - 2" (51 mm)	●	●	●	●	●
SQ 12" (305 mm) Auger Bit - Hex - 4 teeth - 2" (51 mm)	●	●	●	●	●
SQ 18" (457 mm) Auger Bit - Hex - 6 teeth - 2" (51 mm)	●	●	●	●	●
BRUSH MOWER					
Standard Flow Rotary Brush Mowers - 48", 60", 66", 72", 78"	Std. Flow	Std. Flow	Std. Flow	Std. Flow	Std. Flow
High Flow Rotary Brush Mowers - 72", 78", 90"	High Flow	High Flow	High Flow	High Flow	High Flow
PALLET FORKS					
Pallet Fork Frame - Heavy Duty - Requires two tines <i>Can customize with dealer name (on orders of 10 or more)</i>	●	●	●	●	●
Heavy Duty Class II Tine 48" (1219 mm)	●	●	●	●	●
Side Shift pallet Fork with 48" (1219 mm) Tines	Std. Flow	Std. Flow	Std. Flow	Std. Flow	Std. Flow
Sliding Tine Pallet with 48" (1219 mm) Hydraulic Sliding Tines	Std. Flow	Std. Flow	Std. Flow	Std. Flow	Std. Flow
LOG GRAPPLES					
Log Grapple	Std. Flow	Std. Flow	Std. Flow	Std. Flow	Std. Flow
GRADER BLADES					
8" (203 mm) Grader Blade with proportional current valve	Std. Flow	Std. Flow	Std. Flow	Std. Flow	Std. Flow
RAKES					
76" (1930 mm) Auto Rake	Std. Flow	Std. Flow	Std. Flow	Std. Flow	Std. Flow
82" (2083 mm) Grader Rake	Std. Flow	Std. Flow	Std. Flow	Std. Flow	Std. Flow
76" (1930 mm) Preparator Rake	Std. Flow	Std. Flow	Std. Flow	Std. Flow	Std. Flow
90" (2286 mm) Power Rake with hydraulic angle	Std. Flow	Std. Flow	Std. Flow	Std. Flow	Std. Flow
MULCHER					
48" (1219 mm) Brush Mulcher	Std. Flow	Std. Flow	Std. Flow		
ROCK WHEEL					
Rock Wheel with 4.5" (114 mm) wheel, Dual Circuit		High Flow	High Flow	High Flow	High Flow

BEST SELLERS LIST

**A WIDE VARIETY OF EDGE ATTACHMENTS
ARE AVAILABLE FROM YOUR GEHL DEALER.**



● GET ATTACHED



ALL-TACH®

All models feature the easy-to-use All-Tach® (universal-style) attachment mounting system compatible with most allied attachments.

- **SINGLE LEVER DESIGN** for simplicity and strength.
- **HEAVY DUTY MOUNTING PLATE** design for increased rigidity over tube style.



POWER-A-TACH®

Power-A-Tach® all-weather system option allows users to quickly install and remove attachments. An operator leaves the seat only to connect auxiliary hydraulics. This system is compatible with most allied attachments.

To learn more about EDGE® Track Loader attachments, please visit edgeattach.com

● STANDARD ● OPTIONAL

	R1165	R1175 GEN3	R1210 GEN3	R1250 GEN3	V1320
PERFORMANCE					
All-Tach® Mounting System	●	●	●	●	●
IdealTrax™ Automatic Track Tensioning System	●	●	●	●	●
Straight Tracking		●	●	●	
Power-A-Tach® Mounting System	●	●	●	●	●
Selectable Self-Leveling Lift Action (<i>Self-Level standard</i>)	●	●	●	●	●
Two-speed Hydrostatic Drive System	●	●	●	●	●
Horsepower Management System		●	●	●	
ENGINE					
Engine Alert System with Error Display	●	●	●	●	●
Engine Automatic Shutdown System	●	●	●	●	
Glowplugs Starter Assist	●	●	●	●	●
Dual-Element Air Cleaner with Indicator	●	●	●	●	●
ECO Mode					●
HYDRAULICS					
Auxiliary Hydraulics	●	●	●	●	●
High-Flow Auxiliary Hydraulics	●	●	●	●	●
UNDERCARRIAGE					
Elevated Planetary Final Drives	●	●	●	●	●
Maintenance Free Dual and Triple Flange Rollers Each Side	3	3	4	4	4
Single Flange Front/Dual Flange Rear Idlers	●	●	●	●	●
Rubber Track Undercarriage System	●	●	●	●	●
Servo-Controlled Hydrostatic Drive	●				
Dedicated Undercarriage		●	●	●	●
STRUCTURE					
Tilt-out Foot Pod		●	●	●	●
Back-up Alarm	●	●	●	●	●
Combination Radiator & Hydraulic Oil Cooler	●	●	●	●	●
ROPS/FOPS Level II Overhead Guard	●	●	●	●	●
Anti-Vandalism Lock Provisions	●	●	●	●	●
Mechanical Lift Cylinder Lock	●	●	●	●	●
OPERATOR STATION					
Pressurized Cab Enclosure with A/C	●	●	●	●	●
IdealAccess™ Fold-Up Door		●	●	●	●
Multi-Function Function Display Screen	●	●	●	●	●
Drive Sensitivity Adjustment		●	●	●	
Electronic Attachment Control - 14-Pin Connector	●	●	●	●	●
Electro-Hydraulic Joystick Controls		●	●	●	
Selectable Control Pattern Configuration (ISO / Dual-Hand)		●	●	●	
Variable Speed Control, Selectable On & Off		●	●	●	
Foot Throttle	●	●	●	●	●
Full-Suspension Seat	●	●	●	●	●
Air Suspension Seat	●	●	●	●	●

SPECIFICATIONS

track loaders

	RT165	RT175 GEN:3	RT210 GEN:3	RT250 GEN:3	VT320	
DIMENSIONS	A. Overall Operating Height – Fully Raised (mm)	157.8" (4008)	168" (4267)	168" (4267)	168" (4267)	169" (4293)
	B. Height to Hinge Pin – Fully Raised (mm)	119.6" (3038)	128" (3251)	128" (3251)	128" (3251)	130" (3302)
	C. Reach – Fully Raised (mm)	25.3" (641)	34.5" (876)	34.5" (876)	34.5" (876)	40.4" (1026)
	D. Dump Angle – Fully Raised	39°	40.2°	39°	41°	41°
	E. Dump Height – Fully Raised (mm)	91.7" (2329)	98" (2489)	98" (2489)	98" (2489)	99.6" (2530)
	F. Maximum Rollback Angle – Fully Raised	98°	102.5°	102.5°	102.5°	90°
	G. Overall Height at ROPS (mm)	77.5" (1969)	83" (2103)	83.1" (2111)	83.1" (2111)	83.1" (2111)
	H. Overall Length w/ Bucket – Std. c-wt. (mm)	126.2" (3205)	144.0" (3658)	148.1" (3762)	157.8" (4008)	159.8" (4059)
	I. Overall Length w/o Bucket – Std. c-wt. (mm)	94.2" (2393)	110.8" (2814)	116.5" (2959)	126.8" (3221)	127.7" (3243)
	J. Specified Height (mm)	64.5" (1638)	67.5" (1715)	67.7" (1720)	67.7" (1720)	76.3" (1938)
	K. Reach at Specified Height (mm)	22" (559)	31.1" (790)	31.3" (795)	31.3" (795)	29.6" (751)
	L. Dump Angle at Specified Height	73°	75°	75°	75°	68°
	M. Maximum Rollback Angle at Ground	28°	30°	30°	30°	31°
	N. Carry Position (mm)	7.8" (198)	8.2" (208)	8.2" (208)	8.2" (208)	7.8" (199)
	O. Maximum Rollback Angle at Carry Position	28°	31.6°	31.6°	31.6°	31°
	P. Digging Position – Below Ground (mm)	2.1" (53)	+0.9" (23)	+0.6" (16)	+0.5" (13)	+0.74 (19)
	Q. Angle of Departure with Std. c-wt.	28°	30.4°	29.2°	25°	24°
	R. Ground Clearance (mm)	7.25" (184)	13.1" (333)	13.2" (335)	13.2" (335)	12.2" (309)
	S. Track Gauge (mm)	53.4" (1356)	51.7" (1313)	51.7" (1313)	51.7" (1313)	51.7" (1313)
	T. Track Shoe Width (mm)	12.6" (320)	12.6" (320)	17.7" (450)	17.7" (450)	17.7" (450)
	U. Crawler Base (mm)	49.8" (1265)	54.8" (1392)	58.4" (1483)	61.5" (1562)	61.8" (1570)
	V. Overall Width – Less Bucket (mm)	66.0" (1676)	64.4" (1636)	69.5" (1765)	69.5" (1765)	69.5" (1766)
	W. Bucket Width (mm)	66.0" (1676)	65.9" (1674)	73.9" (1877)	83.9" (2131)	83.9" (2131)
	X. Clearance Radius – Front With Bucket (mm)	77.9" (1979)	91.4" (2322)	94.6" (2403)	98.4" (2499)	96.1" (2442)
Z. Clearance Radius – Rear w/ Std. c-wt. (mm)	56.7" (1440)	62.1" (1577)	64.6" (1641)	70.7" (1796)	73.6" (1870)	
Maximum Rollback at Specified Height	68.6°	66.8°	66.8°	66.8°	64.5°	
Angle of Approach	90°	90°	90°	90°	90°	
Grouser Height (mm)	1" (25)	1" (25)	1" (25)	1" (25)	1" (25.4)	
CAPACITY	Operating Capacity at 35% Tipping Load (kg)	1,650 lbs. (748)	1,750 lbs. (794)	2,100 lbs. (953)	2,500 lbs. (1134)	3,200 lbs. (1452)
	Operating Capacity at 50% Tipping Load (kg)	2,357 lbs. (1069)	2,500 lbs. (1134)	3,000 lbs. (1361)	3,571 lbs. (1620)	4,571 lbs. (2074)
	Tipping Load (kg)	4,715 lbs. (2139)	5,000 lbs. (2268)	6,000 lbs. (2722)	7,143 lbs. (3240)	9,143 lbs. (4148)
	Operating Weight (kg)	8,143 lbs. (3693)	8,605 lbs. (3903)	9,800 lbs. (4445)	11,470 lbs. (5203)	11,610 lbs. (5267)
ENGINE	Make/Model	Yanmar/4TNV98C-NMS2 Tier IV	Yanmar / 4TNV98C-NMSL Tier IV	Yanmar / 4TNV98CT-NMSL Tier IV	Deutz / TD 3.6 Tier IV	Deutz / TD 3.6 EPA Final Tier IV
	Type	4-Stroke Naturally Aspirated	4-Stroke Naturally Aspirated	4-Stroke Turbo	4-Stroke Turbo	4-Stroke Turbo
	Displacement (L) / cylinders	201.4 cu.in./4 (3.319 L)	203 cu.in. (3.3) / 4	203 cu.in. (3.3) / 4	221 cu.in. (3.6) / 4	221 cu.in. (3.6) / 4
	Gross Power (kW) @ rpm	69.9 hp (52.1) @ 2500	69.9 hp (52.1) @ 2500	72 hp (53.7) @ 2500	74.3 hp (55.4) @ 2300	114 hp (85 kW)
	Net Power (kW) @ rpm	68.4 hp (51.0) @ 2500	68.4 hp (51) @ 2500	70.7 hp (52.7) @ 2500	70.7 hp (52.7) @ 2300	108 hp (80.8 kW)
	Peak Torque (Nm) @ rpm	178 ft.-lbs. (241) @ 1625	179 ft.-lbs. (242.7) @ 1600	206 ft.-lbs. (279.3) @ 1700	243 ft.-lbs. (330) @ 1500	339 ft.-lbs. (430 Nm)
	Oil Pan Capacity (L)	11 qts. (10.4)	11 qts. (10.4)	11 qts. (10.4)	9 qts. (8.5)	9 qts. (8.5)
	Alternator Voltage / Amperage	14V / 100A	14V / 95A	14V / 95A	14V / 95A	14V/95A
TRACK DRIVES	Drawbar Pull / Tractive Effort (kg)	9,578 lbs. (4,345)	9,917 lbs. (4498)	11,489 lbs. (5211)	12,770 lbs. (5792)	12,770 lbs. (5792)
	Track Type / Track Rollers / Roller Type	Rubber / 3 / Steel	Rubber / 4 / Steel	Rubber / 5 / Steel	Rubber / 5 / Steel	Rubber/Steel
	Track Width (mm)	12.6" (320)	12.6" (320)	17.7" (450)	17.7" (450)	17.7" (450)
	Ground Pressure (bar)	6.5 / 5.2 psi (.45 / .36)	6.2 psi (0.43)	4.7 psi (0.32)	5.3 psi (0.37)	5.3 psi (.37 bar)
FORCES	Bucket Breakout – Tilt Cylinder (kg)	4,230 lbs. (1,919)	5,354 lbs. (2429)	6,631 lbs. (3008)	8,384 lbs. (3803)	9,901 lbs. (4492)
	Bucket Breakout – Lift Cylinder (kg)	5,060 lbs. (2295)	5,016 lbs. (2275)	6,481 lbs. (2940)	7,437 lbs. (3373)	7,491 lbs. (3398)
	Ground Speed – Single Speed (km/hr)	6.5 mph (10.5)	5.3 mph (8.5)	6.1 mph (9.8)	5.8 mph (9.3)	5.3 mph (8.6)
	Ground Speed – Two Speed (km/hr)	10.0 mph (16.1)	7.7 mph (12.4)	8.9 mph (14.3)	8.2 mph (13.2)	7.8 mph (12.6)
VOLUME	Fuel Tank (L)	16.5 gal. (62.5)	24 gal. (91)	24 gal. (91)	24 gal. (91)	32.5 gal. (123)
	Hydraulic Reservoir Tank (L)	11.0 gal. (41.6)	11.0 gal. (41.6)	13.8 gal. (52.2)	13.8 gal. (52.2)	16.5 gal. (62.5)
	Coolant Capacity (L)	3.8 gal. (14.4)	3.5 gal. (13.3)	3.8 gal. (14.4)	5.1 gal. (19.3)	5.1 gal. (19.3)
HYDRAULICS	Auxiliary Hydraulic Flow – Rated Speed (L/min)	18.9 gpm (71.4)	18.5 gpm (70.0)	21.8 gpm (82.5)	24.9 gpm (94.3)	27 gpm (102.2)
	High-Flow Hydraulic Flow – Rated Speed (L/min)	28.5 gpm (119)	34.0 gpm (128.8)	35.9 gpm (135.8)	37.4 gpm (141.6)	37.4 gpm (141.6)
	Transmission Pump Type	Axial Piston	Axial Piston	Axial Piston	Axial Piston	Axial Piston
	Motor Type	Radial Piston		Axial Piston with Planetary Gear Box Reduction		
	Battery Volts	12V	12V	12V	12V	12V
Cold Cranking Amps at Temperature	950 CCA @ 0°F (-18°C)	850 CCA @ 0°F (-18°C)	850 CCA @ 0°F (-18°C)	950 CCA @ 0°F (-18°C)	950 CCA @ 0°F (-18°C)	

OWNER DRIVEN

Gehl authorized dealers offer a full line of compact equipment, backed up by exceptional sales, service and parts experience.

Gehl reminds users to read and understand the operator's manual before operating any equipment. Also, make sure all safety devices and shields are in place and functioning properly.

Gehl reserves the right to add improvements or make changes in specifications at any time without notice or obligation.

For more information on Gehl equipment, visit

gehl.com

